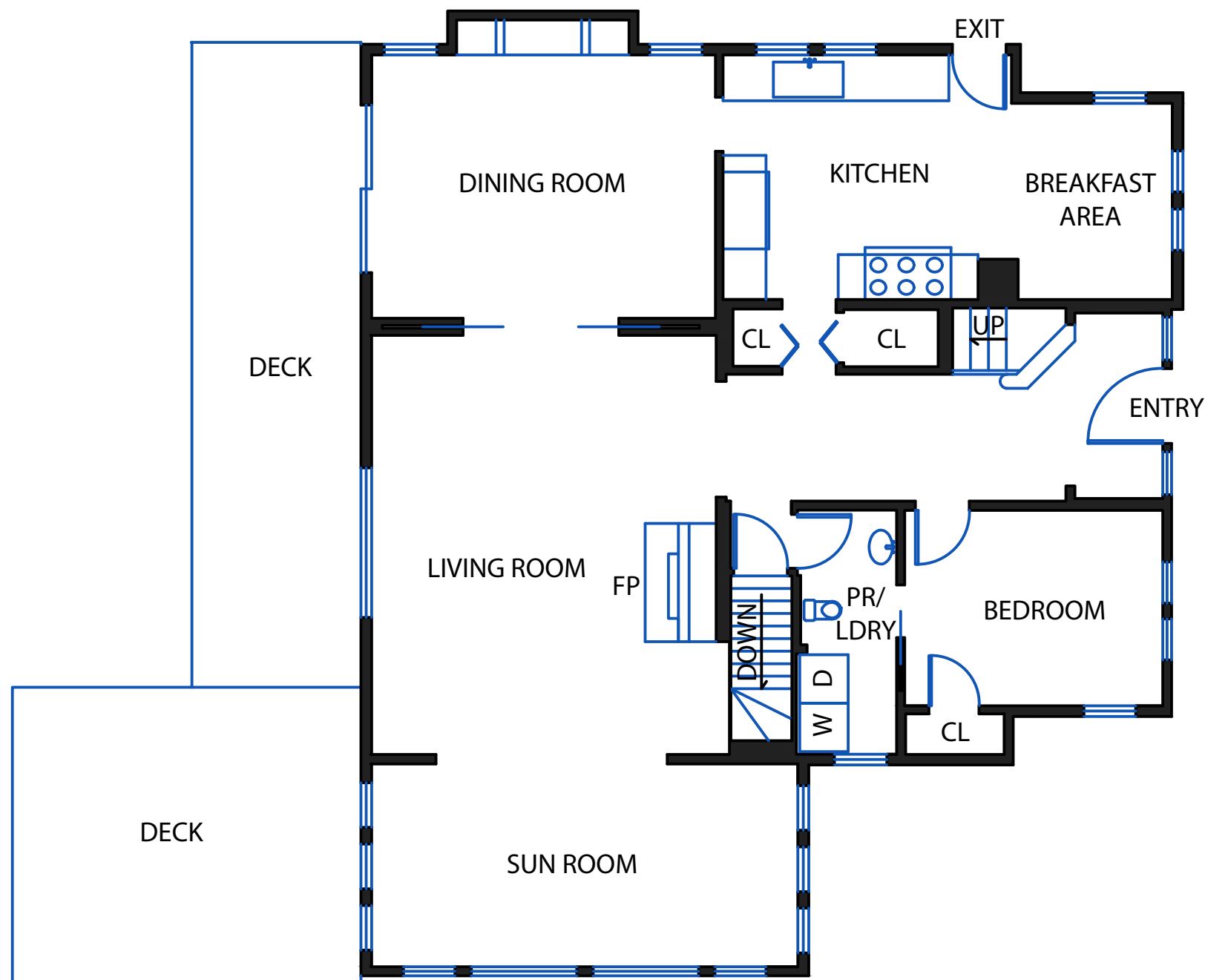
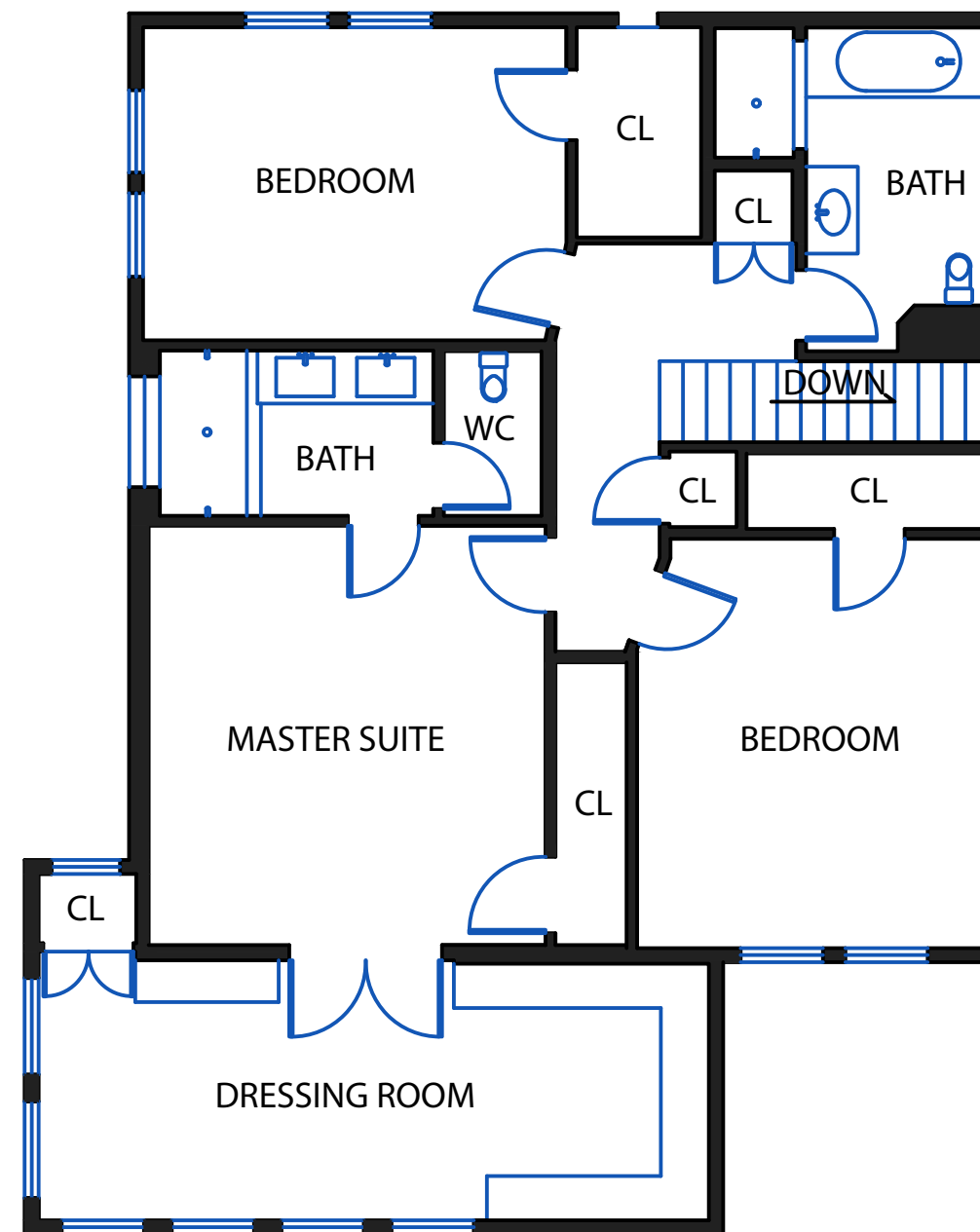


934 ARLINGTON AVENUE

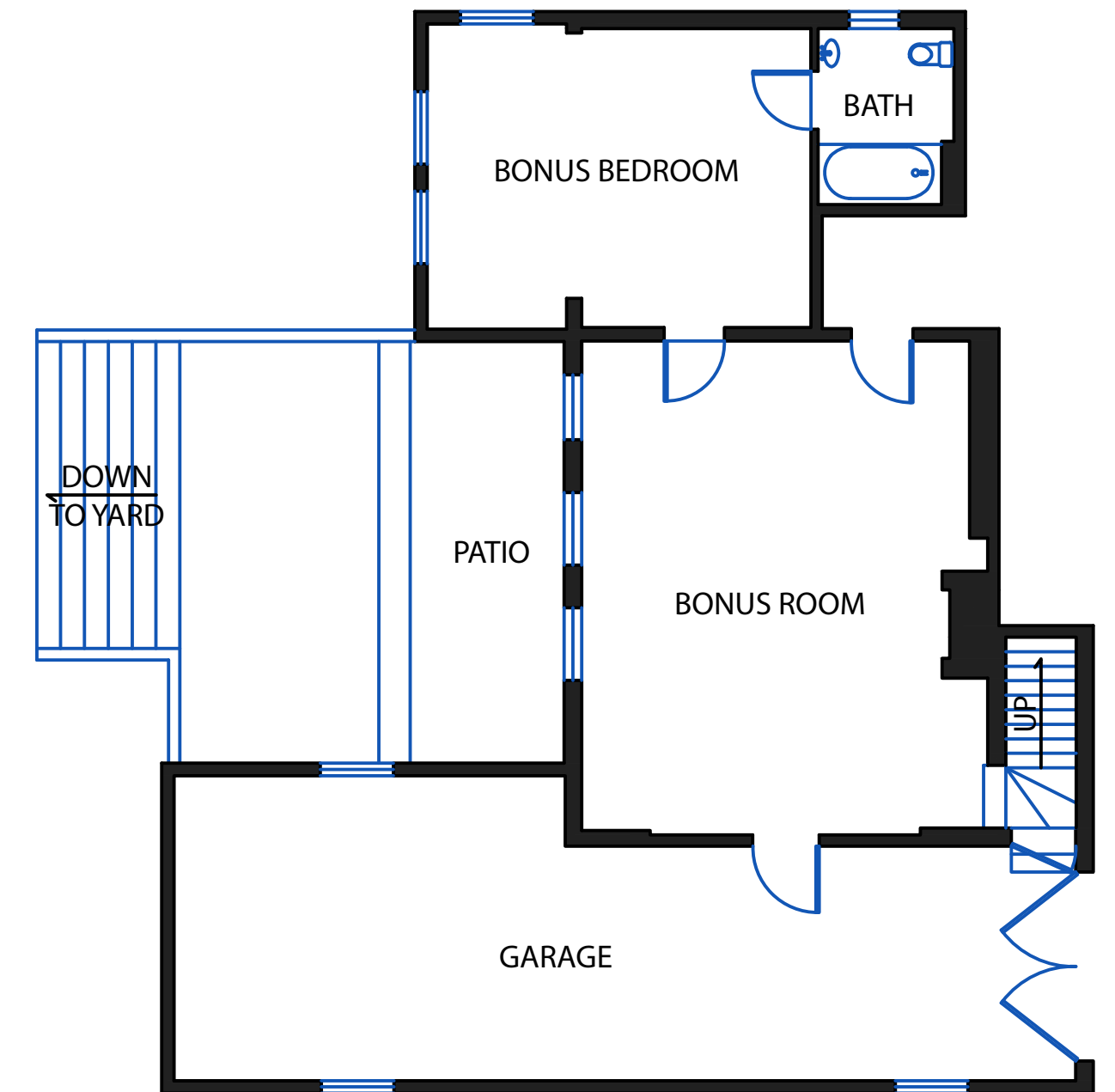
MAIN LEVEL



2nd LEVEL



LOWER LEVEL



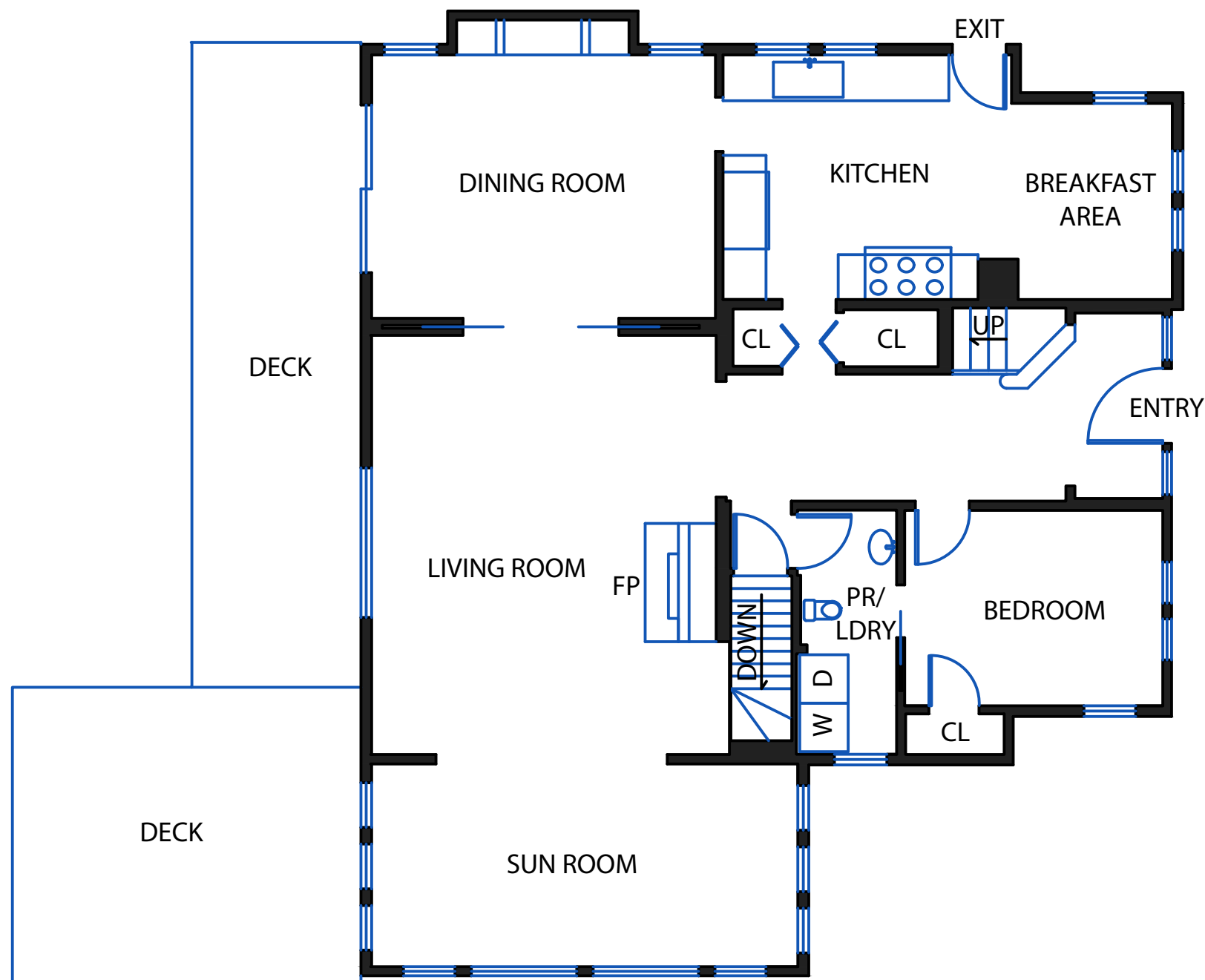
NOTE: FLOOR PLANS, SQUARE FOOTAGE AND DIMENSIONS ARE APPROXIMATE AND NOT FOR CONSTRUCTION PURPOSES. A PROSPECTIVE BUYER SHOULD NOT RELY ON THESE PLANS, SQUARE FOOTAGE AND DIMENSIONS IN MAKING THEIR PURCHASE DECISION AND SHOULD CAREFULLY VERIFY THE ABOVE ITEMS AND ALL OTHER INFORMATION HEREIN.

934 ARLINGTON AVENUE

(APPROX. 3,145 SQFT)

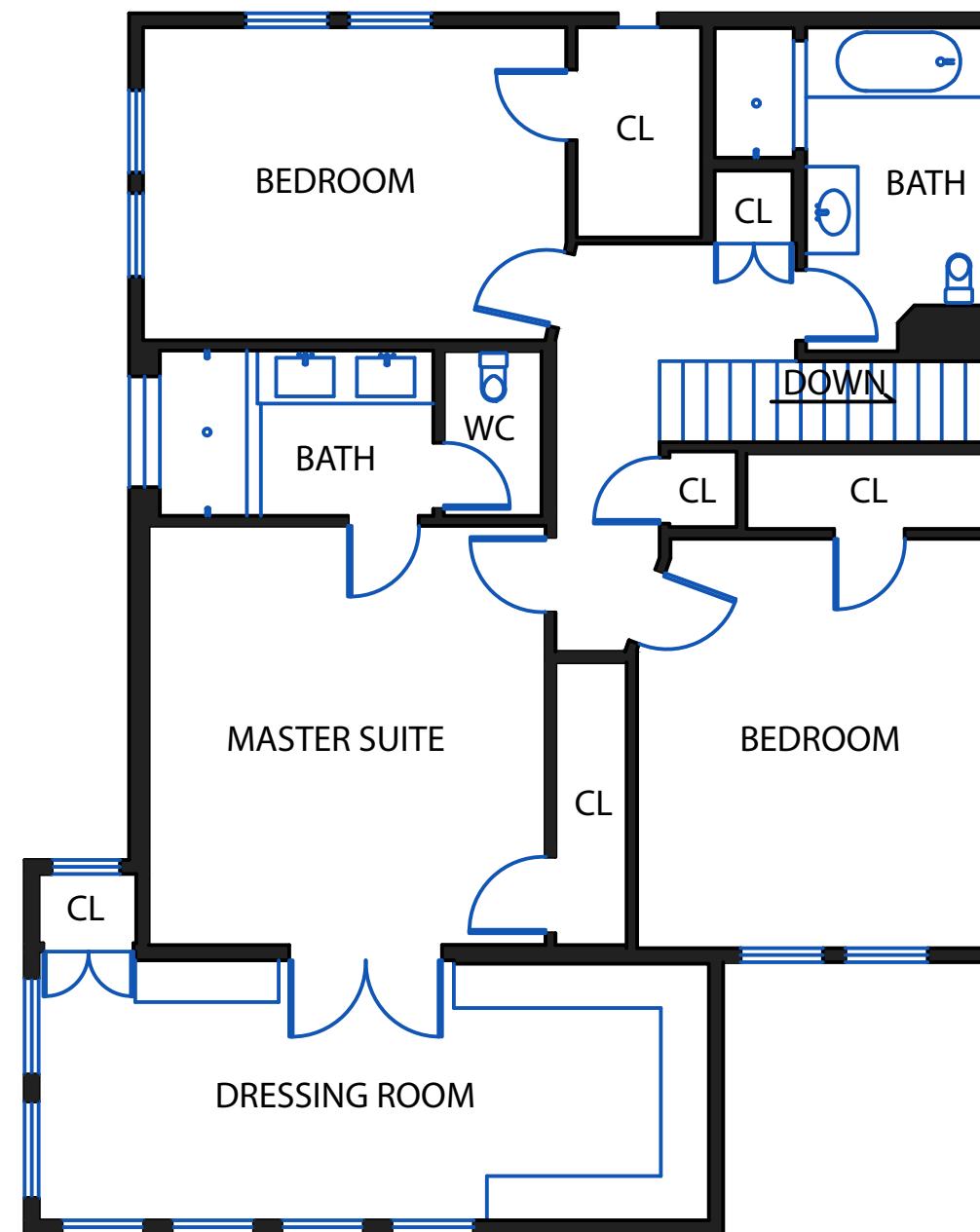
MAIN LEVEL

(APPROX. 1,360 SQFT)



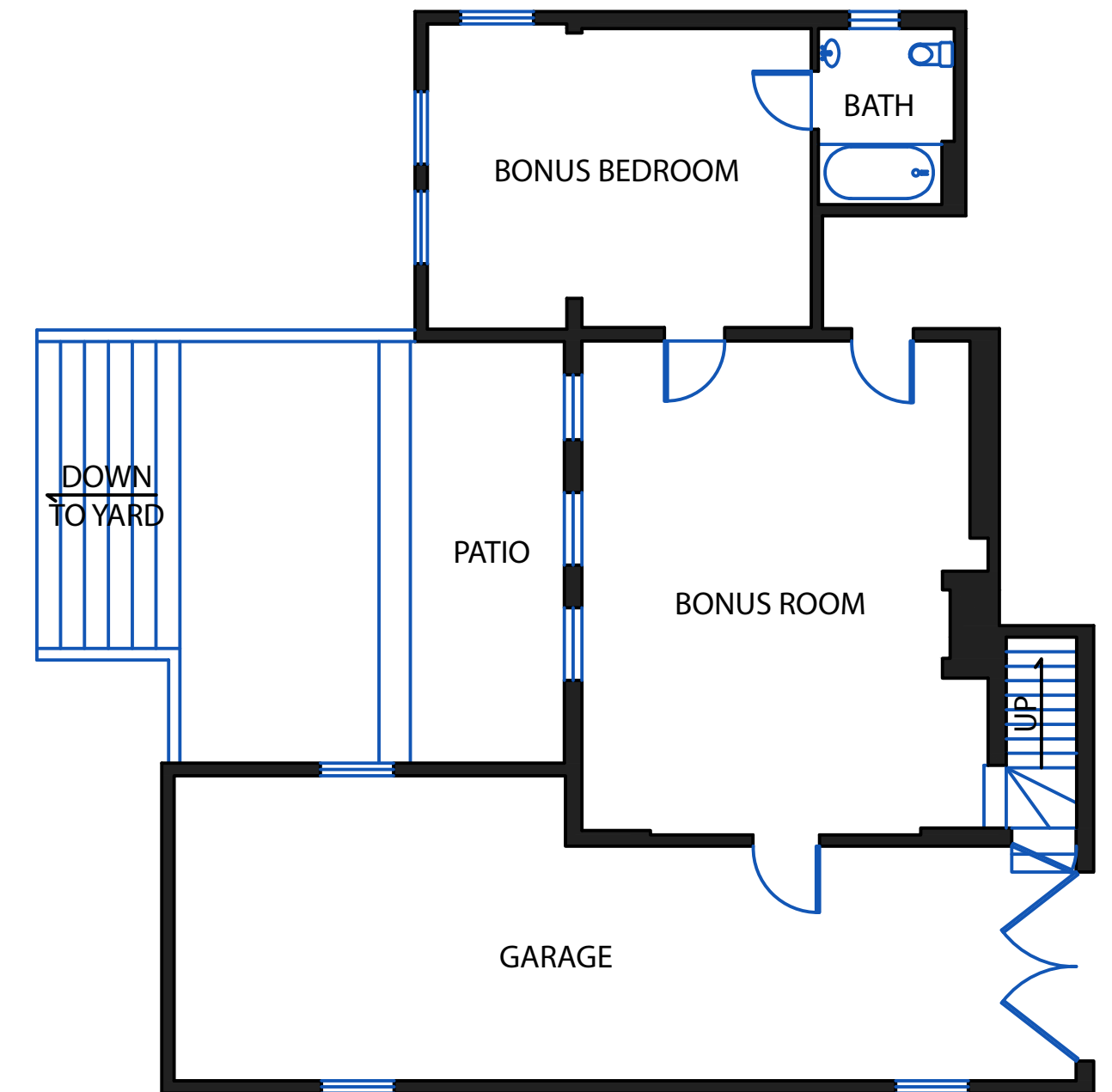
2nd LEVEL

(APPROX. 1,436 SQFT)



LOWER LEVEL

(APPROX. 349 SQFT)



NOTE: FLOOR PLANS, SQUARE FOOTAGE AND DIMENSIONS ARE APPROXIMATE AND NOT FOR CONSTRUCTION PURPOSES. A PROSPECTIVE BUYER SHOULD NOT RELY ON THESE PLANS, SQUARE FOOTAGE AND DIMENSIONS IN MAKING THEIR PURCHASE DECISION AND SHOULD CAREFULLY VERIFY THE ABOVE ITEMS AND ALL OTHER INFORMATION HEREIN.